

Formaldehyde Monitor

The Formaldemeter *ktV-m* offers the same precise 3 parameter monitoring for low levels of hazardous formaldehyde vapors under extremes of temperature and humidity as seen in the world-wide success of the Formaldemeter *ktV* but with the addition of these impressive extra features:

- A built in non-volatile memory
- Capable of up to 1 month of continuous monitoring
- Internal Audible Alarm
- A real time clock
- Mains or battery powered
- Can be used as a manual hand held and a continuous monitoring data logger
- A USB port allowing direct connection to PC
 - For data download and instrument settings.
 - For control by the SPC programmed without the need for additional hardware.



With the subject of Indoor Air Quality becoming more prominent and recognized throughout many different industries, it has become essential to be able to accurately monitor low levels of indoor pollutant gases.

The *ktV-m* can precisely measure formaldehyde concentrations in parts per million (ppm) and mg/m³ over a wide range of temperature and humidity. Fast and easy to use, pressing a single button gives an immediate indication of concentration levels.

The improved Formaldemeter *ktV-m* is reliable and simple to calibrate. The compact size means the *ktV-m* is small enough to be used as a hand held device.

The built in memory and real time clock enables the *ktV-m* to log all 3 parameters and corresponding times, allowing improved monitoring and analysis opportunities.

Formaldemeter™ *ktV-m*

Technical Specifications

Instrument

Sampling method: 10ml sample of air taken by internal pump
Sampling frequency: 1 minute in normal IAQ conditions
Response Time: 60 seconds in high accuracy mode, approx. 8 seconds in low accuracy
Mechanical: 150 x 80 x 34mm ABS plastic case.
 Padded accessory case 266 x 230 x 50mm
Weight: 270g with 9v PP3 battery. Total kit weighs 750g
Power: PP3 9v alkaline battery or 9-15v DC supply

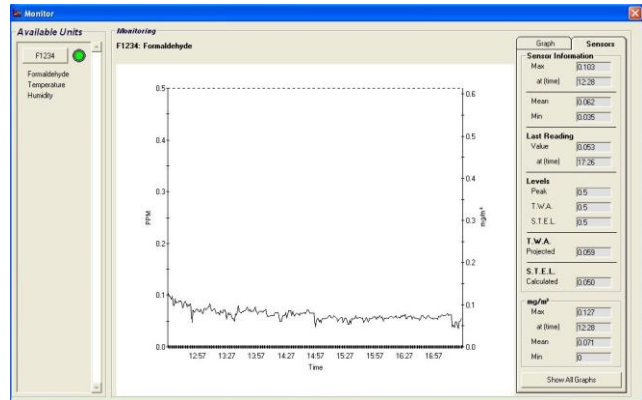
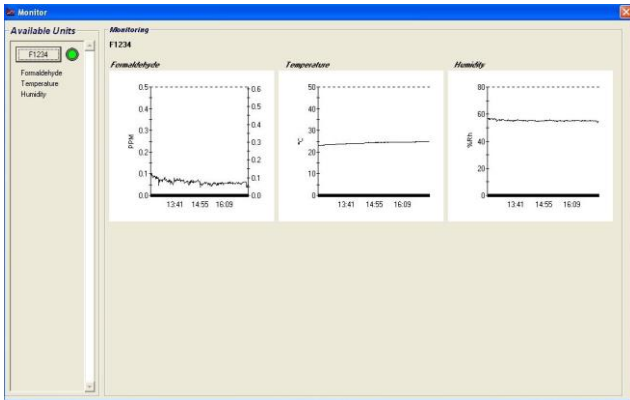
Sensors

Formaldehyde

Type: Electrochemical cell manufactured by PPM Technology
Range: 0-10ppm as standard (0-12.3mg/m³ @ 25°C).
Resolution: 0.01ppm
Precision: 2%
Accuracy: 94% of all instrument readings meet the NIOSH criteria for an acceptable method when measuring 0.3ppm of formaldehyde over a relative humidity range of 25-70%. The NIOSH criterion for acceptability is that all results fall within 25% of the true value at the 95% confidence level.
Calibration: By user with supplied calibration standard or by original manufacturer.

Temperature & Humidity Sensor

Type: Interchangeable digital CMOSens®
Range: -40 to +128°C, 0 to 100% RH
Accuracy: +/- 0.4°C, +/-3% RH. Optional upgrade to +/- 0.3°C, +/-1.8% RH
Calibration: Calibrated to ISO/IEC17025 by manufacturer. Traceable by the "National Institute of Standards and Technology" and the "National Physics Laboratory".



Kit Content

- | | |
|--|-----------------------------|
| 1 each Formaldemeter <i>hctV-m</i> with Stand | 1 each Operation Manual |
| 1 each Formaldemeter <i>hctV-m</i> Calibration Standard | 1 each Download Software CD |
| 1 each Pack of Phenol Filters | 1 each USB Cable |
| 1 each Mains Adapter with Interchangeable AC Mains Plugs | |

hctV-m
 Formaldemeter™